

Conservation Crier

Vol. 33, No. 1
Spring 2024

Newsletter of the  LANCASTER COUNTY CONSERVATION DISTRICT
www.lancasterconservation.org

TREE SEEDLING SALE



Tree Sale Order Pick Up

Friday, April 12, 2024

8 AM – 5 PM

Walk-In Pick up at the Farm and Home Center
1383 Arcadia Rd, Lancaster, PA 17601

Orders Due: Friday, March 8, 2024



Happy 50th Tree Seedling Sale! We here at the District are so grateful for your support over five decades to get green in the ground. Your investment allows the Conservation District to continue important conservation education programs related to streams, watersheds, wetlands, and conservation practices. Thank you for your support!

To celebrate 50 years, we will be offering two unique tree and shrub seedling bundles: a wildlife pack and beauty pack. The wildlife pack features swamp white oak, American hazelnut, ninebark, American plum, and red osier dogwood. Bees, butterflies, birds, and deer will love this selection of diverse food and cover for them. The beauty pack features redbud, serviceberry, sweet bay magnolia, silky dogwood, and black chokeberry. These gorgeous trees and shrubs are sure to enhance your property with beautiful flowers and foliage. Each pack is \$25 and features two of each native shrub or tree. We hope you like them!

Conservation District Agriculture Department



Cover crops and contours.

The Lancaster County Conservation District has seen a lot of growth in the past few years. We have now seen the establishment of a new department, the Data and Analysis Department (see page 2). This new department works in conjunction with the Agriculture and Watershed Departments to help verify agricultural best management practices (BMPs) such as manure pits, grassed waterways, terraces, etc., on farms in the county. By verifying these practices, we will be able to reach more farmers and help them achieve their sustainability goals.

This year we are looking forward to continuing work with our Agriculture Conservation Assistance Program (ACAP). This program was created by the Commonwealth of Pennsylvania to aid farmers by installing BMPs to protect our waterways and prevent excess nutrients from leaving farms. In 2023, the Lancaster Conservation District allocated \$6,906,817.44 towards 43 separate projects. We are in the final year to allocate funds

for the program, should additional funding be identified by the legislature, the program would then continue. The Agriculture Department has seen so much growth over the past year, that the department has become fully staffed. We look forward to continuing this growth in 2024 helping farmers install BMPs, writing and reviewing the plans farmers are required to have, and continuing to help our local farming community.

—Emma Findeisen

Data and Analysis Department

A new department has sprouted at the Lancaster County Conservation District (LCCD): the Data and Analysis Department. The department staff includes the Data Coordinator, Grants Manager, and the newly formed position of BMP Verification Coordinator; together, they coordinate efforts to visit farms in Lancaster County and confirm if the Best Management Practices (BMPs) within that landowner's Conservation Plan or Ag Erosion and Sediment Plan are still functioning as designed years after installation.

While this department has many roles in the District, one major departmental responsibility is to manage the quality assurance verification program. After so many years, BMPs will meet their lifespan, the estimated number of years the BMP is expected to work properly with the right operation and maintenance. After this lifespan is met, the practice is automatically disqualified as an active BMP from the Chesapeake Bay Model, a tool used throughout the Chesapeake Bay watershed to help study and predict how different management actions affect water quality in the Bay. Within the model, organizations may enter data to provide evidence of the efforts made to improve water quality goals for the Bay, regardless of the size or scale of the projects. Verification inspections give each BMP new life in the model, allowing them to retain active status when still functioning properly, and allowing the farmers and landowners to successfully manage their operations while having minimal environmental impact.

Although BMPs have life spans, proper maintenance and operation allow them to last longer than expected. Verification allows LCCD to determine if a practice is still functioning or if restoration is needed to regain function. For any practices that are no longer protecting the environment as intended, the Department connects the farmer with technical and financial assistance as needed. Technical assistance includes creating plans, construction designs, and much more. LCCD's Grant Manager also can secure funds to support the landowner financially through many programs; opportunities that provide public funds, like the Agriculture Conservation Assistance Program (ACAP), or private funds through non-profits like the Chesapeake Bay Foundation's Accelerating Buffers Grant.

The budding of this new department within the framework of LCCD helps us work towards the many goals of the District. By validating previously implemented conservation practices that are still protecting our natural resources, LCCD can continue to work for and aid the public when there are resource or environmental concerns within their community.

—Caitlyn Tynes and Lauren Brodbar

2024 Horse Progress Days

The 30th annual Horse Progress Days returns to Lancaster County this summer, July 5 and 6, at 409 S. Groffdale Road, Leola. The mission is to encourage and promote the combination of animal power and the latest equipment innovations to support small-scale farming and land stewardship. During the turn of the 19th century with the transition to combustible engine power, the tradition of farming with horses decreased significantly. It was thought that horse farming would eventually cease to exist, horse power farming continues to be important to Lancaster County thanks to many within the Plain Sect community. Farming with horses has a long history here in Lancaster County and the surrounding area. The event will include educational seminars and clinics such as tillage, haymaking, logging, and homesteading, with an activity area for children.



Photo source: <https://horseprogressdays.com/>

There will also be demonstrations of the latest technology of horse-drawn implements. Many vendors attending, including Penn State Extension, the Natural Resources Conservation Service, the Lancaster County Conservation District, and food service. If you're looking for a fun day full of learning rich farming history, while supporting the continued use of horse-drawn farming, and eating great food this is the event for you! Further details can be found at <https://horseprogressdays.com/>

—Greg Heigel

Sediment Storage to Bloomin' Basins

As Spring approaches many people across Lancaster County look forward to more sunlight, warmer temperatures, and seeing the early flowers like crocuses and snowdrops bloom. For the Erosion and Sedimentation Department at the Lancaster County Conservation District, we have another reason to love Spring. It is the season for sediment basins to be converted into their permanent form as post-construction stormwater management facilities!

Sediment basins are a tool to manage stormwater and sediment runoff on-site during active construction. Basins in their sediment configuration protect nearby streams, rivers, and ponds from sedimentation by allowing the sediment particles to settle at the bottom before the water is discharged. Design engineers calculate the necessary storage area for each type of runoff, which varies depending on the size and location of a site. There are a few different ways to ensure that only the clean water leaves a sediment basin, one of the most popular is using a skimmer as shown in the top of photo. Skimmers are attached to the outlet structure of a basin with a flexible hose and a PVC pipe, they are designed to float as the water elevation in a sediment basin rises. There is a small orifice at the very end of the skimmer that allows the cleanest water to escape so the basin can slowly dewater, allowing for more storage by the time of the next rain event.



When a construction project is nearing completion and there is a sediment basin on site, they are frequently converted into some type of infiltration basin. Infiltration basins are used to manage stormwater, prevent flooding, and improve water quality. Before a sediment basin can be converted into its permanent condition a few things need to happen. First, it is always recommended to convert a basin during the germinating season. Next, all of the accumulated fine sediment particles that have settled at the basin bottom must be removed. While contractors are excavating the basin bottom they must take great care not to compact the subsoil, otherwise the basin may have difficulty infiltrating. After that, the process can vary greatly depending on the exact design of the permanent basin but some aspects are very common. Many infiltration basins will call for an excavation of the bottom and install a certain depth of amended soils. Amended soils are an engineered mix that will specifically aid in the infiltration and germination of the basin-specific seed mixture. Once the amended soils are installed, the basin is ready to be planted. Basins planted with native mixes are not only more aesthetically pleasing but they offer functional benefits as well. Native mixes including plants like

rushes, sedges, and wildflowers require less maintenance and can promote better infiltration. They often only require mowing once or twice each growing season, and the roots of native wildflowers run much deeper than the typical turf grass used on lawns across America. As you can see in the bottom of photo, our department enjoys watching the journey of a basin successfully converted from sediment storage to a permanent blooming infiltration basin.

—Rachel DiRosato

Social Media a Click that's Trending

With a new year, comes new social media trends. However, we must look back at the previous year to determine what kind of content is being favored in the ever-changing climate of social media platforms. The most engaging and viewed post showcased a rain garden in Lancaster City, highlighting the stormwater management properties of the rain garden and hoping to educate the general public on not only the beauty of the gardens but their functionality as well. In the coming year, we hope to continue showcasing the amazing work that is happening in the community! Never miss an announcement, opportunity, or success story by following the Lancaster County Conservation District on Facebook and Instagram.



@lanastercountyconservationdistrict

—Noelle Cudney





Youth Conservation School - Apply Today

The Lancaster County Youth Conservation School will take place July 21-26 celebrating 46 years of education beyond the backyard. Open to students ages 14-16; this is a summer adventure worth taking.

The Lancaster County Conservation District along with local Sportsmen's Clubs proudly offers a weeklong summer field school focusing on outdoor activities and conservation of our natural resources. Students reside at the school with tents and cots to demonstrate low-impact camping at the Northern Lancaster County Fish and Game Protection Association in West Cocalico Township.

Motivated students should apply. Students gain knowledge about wildlife and conservation, leadership experience, and communication skills. There are many study topics to empower students, ensuring a sustained conservation legacy. Topics include stream restoration, forestry, canoeing, wildlife management, archery, survival, and firearm safety. Students will have the opportunity to meet professionals in various environmental and conservation-related fields and discuss career options with them.

Students benefit from generous County Federated Sportmens Clubs and Community Organizations who provide 90% of the YCS tuition. Students are responsible for a \$25 registration fee. To receive an application, contact the Conservation District at 717-299-5361 x.5 or click www.lancasterconservation.org by June 7.

—Sallie Gregory



High School Seniors: College Scholarship Available

The Lancaster County Conservation District will offer a \$1,000 scholarship to two Lancaster County high school seniors. Applications will be accepted from students continuing their education in the 2024/2025 school year to major in a curriculum that focuses on natural resources and/or conservation. Examples of acceptable programs of study include Environmental Sciences; Wildlife and/or Fisheries Biology; Environmental Resource Management; or other related programs, leading to an advanced degree (2 yr. Associate Degree or 4 yr. Baccalaureate Degree). Completed applications must be received in the Lancaster County Conservation District office by Thursday, March 28, 2024.



The scholarship committee of the Conservation District will conduct a review of the applicants beginning in April 2024. The basis for the selection will be determined by the applicant's past academic performance and activities, current school and community involvement, future purpose and direction, and communication skills. The scholarship committee, before final selection, will interview top candidates. The successful candidates will be announced by mid-May 2024.

The scholarships are made possible by a bequest to the Lancaster County Conservation District by Ann Brown, an individual concerned that we maintain and protect our natural resources. Additional information and scholarship applications are available on the Conservation District's website: www.lancasterconservation.org/ann-brown-scholarship/.

—Noelle Cudney

Highlighting the Watershed Department

Spring brings in promises of new beginnings and brighter days. And that is exactly what the Octoraro Creek watershed needs. The Octoraro Creek watershed is a new area for stream restoration work by the Lancaster County Conservation District. There are two projects that the watershed department will be breaking ground for this spring season. Both projects will be taking place in Little Britain township—one on the Octoraro Creek and the other, a tributary to the Creek.

The project on Octoraro Creek aims to address highly eroded banks that are eating away at the property line of a neighborhood. Through bank stabilization, riparian buffer planting, and the addition of a few in-stream structures, the Conservation District is working with landowners to renew this section of the Octoraro Creek and demonstrate the importance of stream restoration for this community.

The stream restoration project on the Reynolds Run tributary to the Octoraro Creek will focus more on increasing habitat for fish and macroinvertebrates. The Conservation District was delighted to learn that the tributary is home to naturally reproducing trout, and therefore, is designing a project that will allow the fish to flourish year-round. By implementing in-stream structures, stress on the streambanks will be reduced and critical aquatic species habitat will be provided. This will help improve the water quality of the tributary, and therefore, Octoraro Creek.

Aside from the natural stream channel restoration, these two projects have the potential to inspire future stream restoration work across the watershed. The Conservation District often finds that when a community sees one neighbor participating, others are more intrigued to get involved! And what better time of year to witness the beautiful change in streams than when nature is blossoming with new life.

www.lancasterwatersheds.org

The watershed department decided that the Watershed tab on the Lancaster County Conservation District website needed to be revamped in 2023. With the help of the Conservation District Data Coordinator, the team worked hard to make the webpage easy to navigate and provide real-time water quality data from projects that have been implemented across the county.

The new website also breaks down information by watershed, allowing users to figure out what watershed they reside in. With the addition of helpful links, educational resources, and featured events, website viewers are allowed to get more involved in community efforts that connect them deeper with Lancaster watersheds!

—Grace Chamberlain

Dirt and Gravel Roads/Low Volume Roads Program

With spring comes a new opportunity to pursue Dirt & Gravel and/or Low Volume Road projects within Lancaster County. The District's Quality Assurance Board has \$200,000 to be allocated and is now accepting applications for both Dirt & Gravel and Low Volume Road projects. Municipalities interested in applying must complete and submit an application by Friday, February 16, 2024. It is important to note that the first step required of all applicants is to contact the Lancaster County Conservation District to discuss their projects so Conservation District staff can assist in the application process. The Quality Assurance Board will review all applications on March 6th at 5:30 pm at the Farm & Home Center. The selected projects will be presented to the Conservation District Board of Directors that same evening.

A Dirt & Gravel/Low Volume Road Workshop has been planned for the spring for those interested in "Before and After a Driving Surface Aggregate (DSA) and Drainage Project". The workshop will provide an opportunity for municipal workers and road maintenance crews to visit a Dirt and Gravel project both before and after the project is completed, and to speak with the township about their experience with the DG/LVR program. Registration will be required. Stay tuned for updates on workshop details.

If you have any questions about the Dirt & Gravel/Low Volume Road Program, please reach out to Tyler Keefer for more information at the Conservation District.

Email: TylerKeefer@lancasterconservation.org

Phone: (717) 275-0224

Lancaster Watershed Leadership Academy Celebrates 2023 Scholars

An intensive program is producing the next generation of conservation leaders in Lancaster County.

On December 14, instructors and guests met at the Cork Factory Hotel in Lancaster City for a formal dinner and commencement celebrating the twelve graduating scholars of Lancaster Watershed Leadership Academy class of 2023. During the ceremony guest speakers, Jill Whitcomb from PA Department of Environmental Protection and Doug Wolfgang from PA State Conservation Commission spoke about the importance of leadership in the clean water efforts in Lancaster County.



Photo provided by Lancaster Clean Water Partners

The Lancaster Watershed Leadership Academy is a bi-annual program that supports the personal leadership development of individuals involved in the collective effort for clean water in Lancaster County. The inaugural class began in 2020 and consisted of eight scholars. When asked about the impetus for the program, Allyson Gibson, Executive Director for the Lancaster Clean Water Partners and instructor/co-founder of the Academy said, “although there has been so much amazing clean water work happening in Lancaster County for a long time, there is still a need for people to lead the charge for clean water.”

“We need more people to have leadership skills, we need people who know what the watershed issues are and how to manage them as a community-based effort. So, the goals of the Academy are to introduce more people to those watershed concepts, the science side of it, and how to weave in the leadership skills.”

The twelve-month program is jam-packed with watershed content, field investigations, professional leadership content, and an overnight retreat on the Chesapeake Bay. As part of their curriculum, each scholar completed an action project that they researched, planned, and implemented to make a tangible difference for water quality in their communities.

When asked what he is learning about himself through his Academy participation, Andrew Pauls-Thomas, Grants Coordinator for the Lancaster County Conservation District said, “I am learning that I enjoy talking to people and relationship-building more than I like coordinating all of the details and logistics of an event.”

The Academy is currently seeking scholars for its 2025 cohort.

For more information about the Academy and its scholars, go to

<https://lancastercleanwaterpartners.com/lancaster-watershed-leadership-academy/>



Lancaster
CLEAN WATER PARTNERS

—Kenn Bennett



New Staff

Morgan Regan joined the Conservation District recently filling the position of Administrative Assistant Specialist with support to the Erosion and Sedimentation Department and the Education and Watershed Departments. Morgan grew up in Delaware County and moved to Lancaster a few years ago to go to Millersville University where she got her B.A. in Mathematics. In her free time, she enjoys spending time at the gym, with friends, or on the water. She also loves to read, bake, and craft.

welcome
A B O A R D

Compost Available

Nearly all Pennsylvania soils are low in organic matter. An increase of only 1 to 1.5% organic matter will greatly improve the physical quality of soil and result in better root penetration. Composted organic matter can be a very effective addition to the soil which, in time, will decompose to enhance the quality of the soil. *Source: Penn State University, College of Agricultural Sciences.*



FREE compost will be available to all Tree Sale customers. Please bring 1-3 buckets to fill.



R = Rootstock
H = Height at Pickup
BT = Blooming Time

Description of Fruit Trees & Plants

RT = Ripening Time
O = Other



CRIMSONCRISP APPLE (bareroot)

Well drained soil, Full sun

Medium in size, crimson color. Firm, crisp texture with a tart flavor. Grower friendly, fruiting on 2 and 3-year-old branches.

- R EMLA 7
- H 4-5 ft
- BT Mid-season
- RT Mid-September
- O The most widely planted freestanding semi-dwarf rootstock. EMLA 7 trees exhibit an open spreading-type growth similar to peach trees in size. The trees fruit well in a dry season. Trees are relatively well anchored, but support is recommended on weak sites. EMLA 7 has a tendency to rootsucker.



APPLE



GOLDRUSH APPLE (bareroot)

Well drained soil, Full sun

Best known for its keeping qualities. Will keep in cold storage for 10-11 months. Fruit is crisp and tart, develops sugars in storage. Resists oxidation when cut, excellent baking. Golden yellow color.

- R EMLA 7
- H 4-5 ft
- BT Late season
- RT Mid-late October
- O The most widely planted freestanding semi-dwarf rootstock. EMLA 7 trees exhibit an open spreading-type growth similar to peach trees in size. The trees fruit well in a dry season. Trees are relatively well anchored, but support is recommended on weak sites. EMLA 7 has a tendency to rootsucker.



AVALON NECTARINE (bareroot)

Well drained soil, Full sun

Ripens early season, excellent red-orange color and flavor. High productivity. Fruit is firm and balanced in flavor. Self fertile (No need for cross pollination).

- R Lovell
- H 4 ft
- BT Early season
- RT Mid-July
- O Lovell rootstocks result in 15-25 ft. trees, if unpruned. This standard rootstock provides good anchorage and high disease resistance to trees. Lovell is more tolerant of wet soils than some other peach rootstocks.

NECTARINE



ENCORE RASPBERRY (RED)

6-10"

Slightly acidic soils, Full sun

Vigorous, sturdy, nearly spineless and excellent winter hardiness. Berries are red and large with good flavor. Extends the summer picking season and offers high yield.

RASPBERRY



CANADIAN HEMLOCK

(bundle of 10 trees)

Tsuga canadensis

A/S 2 yrs. / 6-10"

G Well drained soils, partial/full shade

C Evergreen with dense foliage and a pyramidal shape. Reaches 70 feet, and has flat needles and small cylindrical cones.



RED CEDAR

(bundle of 10 trees)

Juniperus virginiana

A/S 2 yrs. / 8-14"

G Tolerant of many soils, full sun to partial shade

C Evergreen with dense, aromatic foliage and reddish-brown bark. Grows 50 feet tall, excellent for wildlife.



WHITE PINE

(bundle of 10 trees)

Pinus strobus

A/S 4 yrs. / 10-15"

G Well drained soils, full sun to partial shade

C Evergreen conifer with blue-green needles, reaches 100 feet tall. Produces slender cones, excellent for birds.



PIN OAK

Quercus palustris

A/S 2 yrs. / 12-18"

G Moist/well drained soils, full sun

C Deciduous tree with distinctive leaves and pyramidal shape. Grows 70 feet tall, turns vibrant red in fall, has acorns.



RED OAK

Quercus rubra

A/S 1 yr. / 12-18"

G Well drained soil, tolerant, full sun

C Deciduous tree with lobed leaves, excellent fall color. Reaches 75 feet, and produces acorns.



SUGAR MAPLE

Acer saccharum

A/S 2 yrs. / 6-12"

G Well drained, slightly acidic soil, partial shade to full sun

C Valued timber tree with wildlife value. Elliptical crown with dark green leaves turning yellow, orange or red in fall. 60'-75' tall & 40'-50' wide.



SWEET GUM

Liquidambar styraciflua

A/S 1 yr. / 12-18"

G Well drained, moist soil, full sun to partial shade

C Deciduous species with star-shaped leaves and spiked fruits, reaches 75 feet tall. Excellent fall color.



SYCAMORE

Platanus occidentalis

A/S 1 yr. / 12-18"

G Moist soil, tolerant of wet soil, full sun to partial shade

C Deciduous tree known for white/brown bark, reaches 100 feet, with distinctive leaves.



TULIP POPLAR

Liriodendron tulipifera

A/S 1 yr. / 12-18"

G Well drained soil, tolerant, full sun to partial shade

C Tall, fast growing deciduous species with tulip-shaped flowers and excellent fall color. Reaches 90 feet, and tends to grow very straight with distinctive leaves.



BUTTON BUSH

Cephalanthus occidentalis

A/S 1 yr. / 12-18"

G Moist/wet conditions, full to partial sun

C Deciduous shrub with unique spherical flowers and glossy green leaves. Grows 12 feet tall, great for pollinators.



PAW PAW

Asimina triloba

A/S 3 yrs. / 12-20"

G Well drained soils, partial shade to full sun

C Small deciduous tree with large, tropical looking leaves and edible fruits. Reaches 20 feet tall.



PERSIMMON

Diospyros virginiana

A/S 1 yr. / 12-18"

G Well drained soil, tolerant, full sun

C Deciduous species known for orange edible fruit and glossy green leaves. Reaches 60 feet, and has smooth gray bark. Fruits in fall.



SPICEBUSH

Lindera benzoin

A/S 1 yr. / 12-18"

G Moist, well drained soils, partial shade to full sun

C Deciduous shrub/small tree with aromatic leaves and red berries. Reaches 12 feet, has yellow-green flowers.



ARTEMESIA "Silver Mound"

Artemisia schmidtiana

Size 3-6"

G Full Sun

C Compact perennial with finely textured, silver/gray foliage forming a dense, rounded mound. Low maintenance and elegant.



CANDYTUFT IBERIS "Whistler White"

Iberis sempervirens

Size 3-6"

G Fullsun

C Compact, evergreen perennial with pure white flowers that blanket the foliage in spring. Low growing, mound forming, and excellent for borders, ground cover, and brightening up a landscape.



CORAL BELLS "Ruby Red"

Huechera sanguinea

Size 3-6"

G Full Sun

C Striking, deep red foliage and delicate bell-shaped flowers that bloom on slender stems. Provides year-round interest with colorful leaves and vibrant blooms.



GIANT CORKSCREW RUSH "Big Twister"

Juncus Effuses

Size 3-6"

G Wet/Moist soils, full sun

C Tall, smooth, curly foliage. Likes wet soil and can be submerged in up to 4" of water. Excellent to provide texture and interest in hard-to-landscape areas.



ICELAND POPPY "Gnome Mix"

Papavar nudicaule

Size 3-6"

G Full sun

C Great blend of yellow, orange, pink and white flowers in cup-shaped blooms atop slender stems. A colorful addition to beds or containers.



NEW ENGLAND ASTER "Purple Dome"

Symphyotrichum novae-angliae

Size 3-6"

G Average soil moisture, full sun

C Early fall blooms with deep lavender/purple flowers, great for pathways and filling small spaces.



VERBENA "Hot Pink"

Verbena peruviana

Size 3-6"

G Full sun

C Clusters of bright pink flowers, hardy and able to withstand high heat and low cold. Adds lasting color all season long.

A/S = Age/Size
G = Growing Conditions

Description of Tree Sale Items

C = Characteristics

New this year!



Black Chokeberry



Red Bud

BEAUTY PACK

Includes 2 each of
**Black Chokeberry,
Red Bud, Serviceberry,
Silky Dogwood, and
Sweet Bay Magnolia.**

A/S 1 yr. / 6-12"

All species have excellent
wildlife value. Provides
good year-round color.



Serviceberry



Silky Dogwood

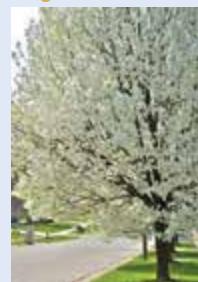


Sweet Bay Magnolia

New this year!



American Hazelnut



American Plum

WILDLIFE PACK

Includes 2 each of
**American Hazelnut,
American Plum,
Ninebark,
Red Osier Dogwood,
and Swamp White Oak.**

A/S 1 yr. / 6-12"

Excellent wildlife value!



Ninebark



Red Osier Dogwood



Swamp White Oak



ELDERBERRY

Sambucus canadensis

A/S Containerized seedling. 2 yrs. / 10-18"

G Moist, well drained soils. Prefers full sun-
partial shade

C Deciduous shrubs with clusters of white
flowers and dark purple berries. Grows up to
12 feet tall, excellent for birds and pollinators.
Berries are edible, often used for jams or
wines.



NANNYBERRY

Viburnum lentago

A/S Containerized seedling. 2 yrs. / 10-18"

G Moist, well drained soils. Full sun to partial
shade.

C Small deciduous tree/shrub with white flowers,
blue/black berries, glossy green leaves, grows
up to 20 feet tall. Attracts birds and is quite
ornamental.



YELLOW BIRCH

Betula alleghaniensis

A/S Containerized seedling. 2 yrs. / 10-18"

G Moist, well drained soil. Partial shade to full
sun

C Deciduous trees known for their yellowish-
brown bark and drooping branches. Grows up
to 80 feet, excellent yellow fall foliage and
small winged seeds.



LITTLE BLUESTEM "THE BLUES"

Schizachyrium scoparium

Size 2-4" bareroot

G Full sun, best in moist, well drained soils.

C Prairie grass with blue foliage accented by red
stems. Other colors appear in fall, including
purple, orange, and many shades of blue.
Grows upright, clumping. Easy care.



CAREX PENNSYLVANICA Groundcover

Carex Pennsylvanica
(18 plants/flat)

Size 2-3"

G Partial sun/shade

C Popular lawn alternative for home landscaping,
with fine textured leaves and a creeping habit.
Reaches heights of 8" when in bloom, grows
actively in spring and fall. Forms a dense, low
growing turf. Prefers a well-drained, drier soil.



VARIEGATED LIRIOPE Groundcover

Liriope muscari
(18 plants/flat))

Size 2-3"

G Full/partial sun

C Attractive green and white striped foliage,
evergreen and clumping. Blooms in late
summer/fall with clustered violet flowers.
Great for edging walking paths or as ground
cover.



LANCASTER COUNTY
CONSERVATION DISTRICT

Tree Seedling Sale

pre-paid order form

Order Forms Due: Friday, March 8, 2024

Order Pickup: Friday, April 12, 2024

**Indicates required field*

*Name _____
First Last

*Mailing Address _____

Street _____

City, State, Zip _____

*Phone: Circle home / cell _____

() _____

Email _____

FFA Chapter or Watershed Association if applicable: _____

Mail order form WITH payment to:

ATTN: Tree Sale
Lancaster County Conservation District
1383 Arcadia Rd., Rm 200
Lancaster, PA 17601

For Office Use Only

Order No. _____

Contact No. _____

Date Rec'd _____

Check No. _____

Payment \$ _____

CONIFERS (Bareroot Bundles of 10 Trees)	# of Bundles	Price/Bundle	Amount
Canadian Hemlock		\$ 12.00	\$
Red Cedar		\$ 12.00	\$
Eastern White Pine		\$ 12.00	\$

HARDWOODS (Bareroot)	# of Trees	Price/Tree	Amount
Pin Oak		\$2.50	\$
Red Oak		\$2.50	\$
Sugar Maple		\$2.50	\$
Sweet Gum		\$2.50	\$
Sycamore		\$2.50	\$
Tulip Poplar		\$2.50	\$

WILDLIFE SPECIES (Bareroot)	# of Trees	Price/Tree	Amount
Button Bush		\$2.50	\$
Paw Paw		\$2.50	\$
Persimmon		\$2.50	\$
Spicebush		\$2.50	\$

PERENNIAL (Quart Pot)	# of Pots	Price/Pot	Amount
Artemesia "Silver Mound"		\$ 5.50	\$
Candytuft Iberis "Whistler White"		\$ 5.50	\$
Coral Bells "Ruby Red"		\$ 5.50	\$
Giant Corkscrew Rush "Big Twister"		\$ 5.50	\$
Iceland Poppy "Gnome Mix"		\$ 5.50	\$
New England Aster "Purple Dome"		\$ 5.50	\$
Verbena "Hot Pink"		\$ 5.50	\$

ASSORTED PACKS (Bareroot Bundles)	# of Packs	Price/Pack	Amount
Beauty Pack. Includes 2 each of Black Chokeberry, Red Bud, Serviceberry, Silky Dogwood, and Sweet Bay Magnolia.		\$ 25.00	\$
Wildlife Pack. Includes 2 each of American Hazelnut, American Plum, Ninebark, Red Osier Dogwood, and Swamp White Oak.		\$ 25.00	\$

*PRE-PAID PAYMENT: ☐ Cash

☐ Check Please make checks payable to the Lancaster County Conservation District

☐ VISA ☐ MasterCard ☐ Discover

*Signature _____

*Name As It Appears On Card _____

*Credit Card Number _____

*Exp Date _____

*Sec# _____

FRUIT TREES (Sold Individually - Barefoot)	# of Trees	Price/Tree	Amount
CrimsonCrisp Apple		\$ 20.00	\$
Goldrush Apple		\$ 20.00	\$
Avalon Nectarine		\$ 20.00	\$

FRUIT PLANTS (Individual plant, bareroot)	# of Plants	Price/Plant	Amount
Encore Raspberry		\$ 3.50	\$

CONTAINERIZED SEEDLINGS	# of Pots	Price/Pot	Amount
Elderberry		\$ 7.00	\$
Nannyberry		\$ 7.00	\$
Yellow Birch		\$ 7.00	\$

PERENNIAL GRASS (Bareroot)	# of Plants	Price/Plant	Amount
Little Bluestem		\$4.50	\$

GROUNDCOVER	# of Flats	Price/Flat	Amount
Variegated Liriope (18/flat)		\$ 29.00	\$
Carex Pensylvanica (18/flat)		\$ 39.00	\$

Tree Protector with stake, birdnet and zip ties	# Protectors	Price Each	Amount
		\$ 10.00	\$

TOTAL AMOUNT DUE \$ _____

Round up the final amount and donate the difference to the Lancaster County Youth Conservation School program. Summer field school for teens 14-16 years old. \$ _____

NO REFUNDS AFTER

The District is not responsible for seedlings not picked up by 5:00 p.m. Friday, April 12. Call before April 12 if you have a problem with pickup. We reserve the right to substitute a different variety seedling for any species pending availability. If any one species is sold out, the District will refund payment for those not available.

ONLINE ORDERS AVAILABLE

www.lancasterconservation.org



LANCASTER COUNTY CONSERVATION DISTRICT

1383 Arcadia Rd Rm 200
Lancaster PA 17601-3149

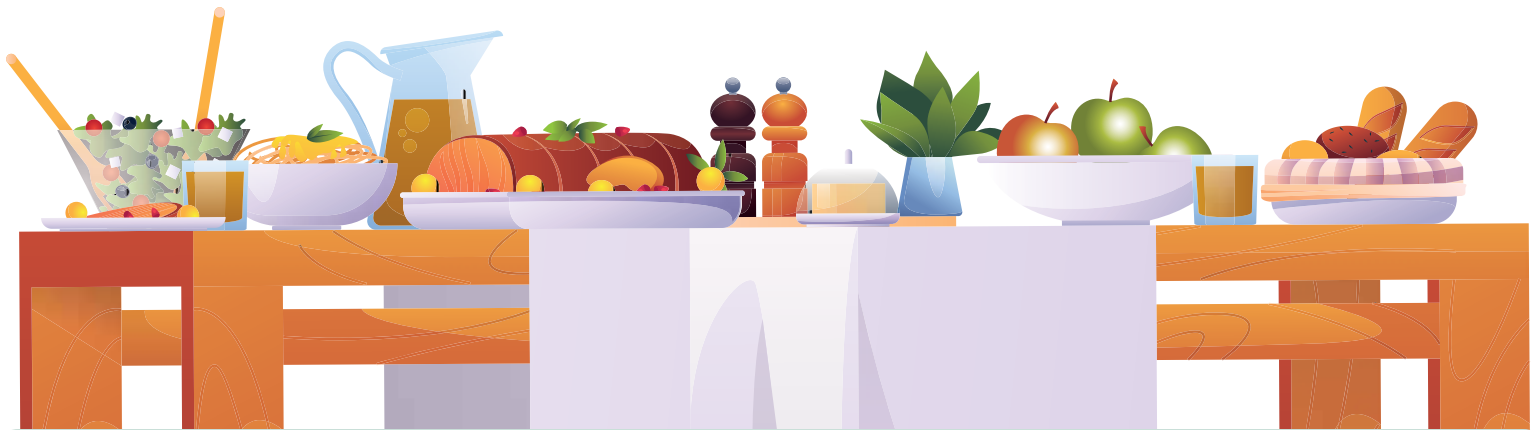
NONPROFIT ORG.
U S POSTAGE
PAID
LANCASTER PA
PERMIT NO 409



IN THIS ISSUE: 2024 TREE SEEDLING ORDER FORM

Order Forms Due: Friday, March 8, 2024

Order Pickup: Friday, April 12, 2024



2024 Annual Banquet & Scholarship Fundraiser Auction

March 26, 2024 – 6:15 PM

Farm & Home Center, Lancaster

Lancaster County Conservation District will recognize individuals and organizations that have contributed to natural resource conservation within the county at the District's 71st annual banquet on Tuesday, March 26, 2024.

The evening program will also include the 17th Annual Scholarship Fundraiser Auction, benefiting the District's collegiate scholarship program.

Contact 717-299-5361, ext. 2512, to make banquet reservations, by March 8 or to donate an item to the scholarship auction.

